

BIM-LCA: Introduction to Revit



BIM-LCA

What is Revit?



BIM-LCA



AUTODESK Revit 2023



BIM-LCA



Co-funded by
the European Union



What is Revit used for?



BIM-LCA



BIM-LCA



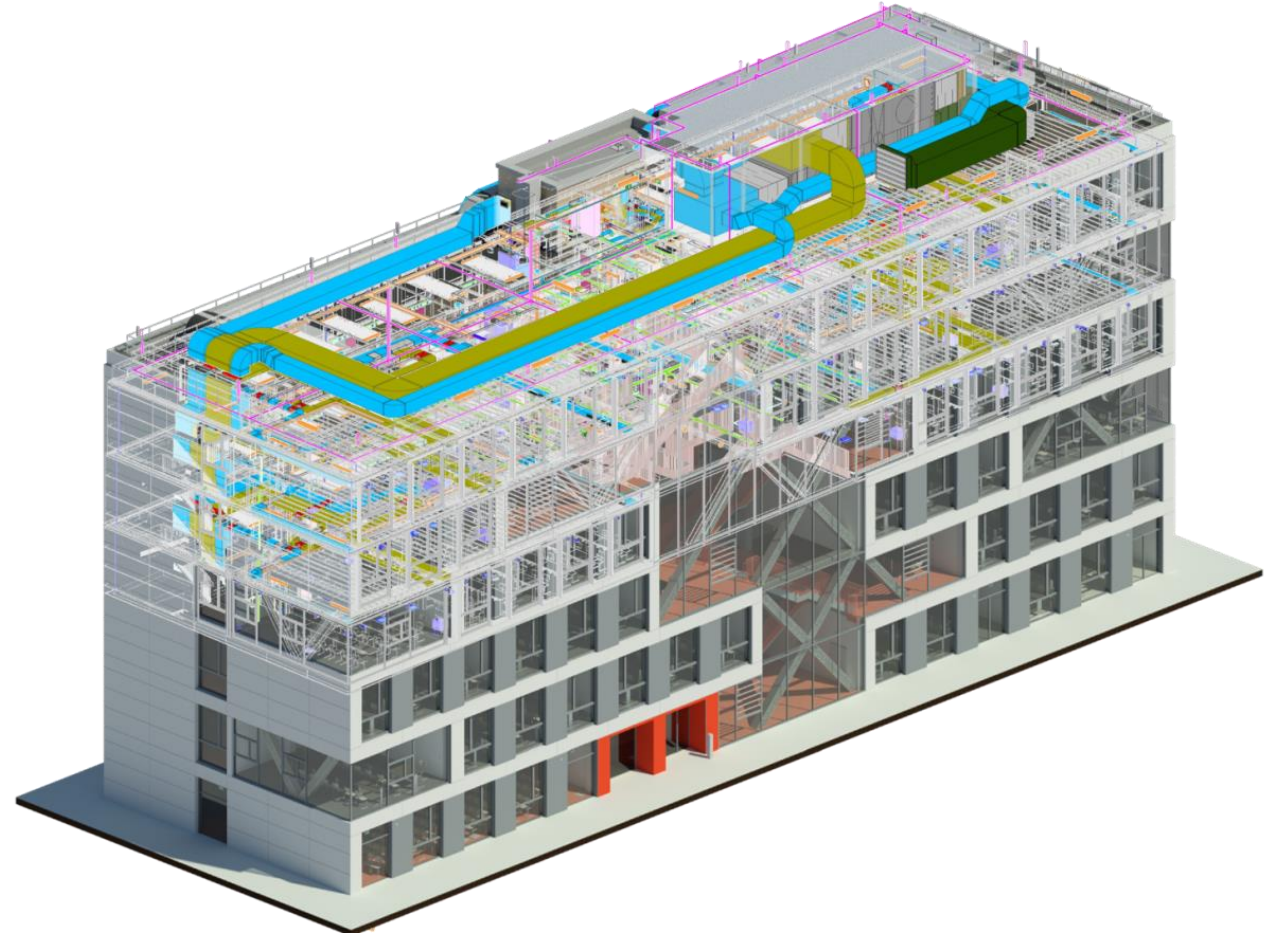
Co-funded by
the European Union

What can you do in Revit?



BIM-LCA

- Realistic models:
 - 3D-modeling
 - Geometry/Shapes
 - Information
 - Collaboration
 - Quantity estimation
 - Level of development (LOD)



BIM-kiosk



BIM-LCA



Co-funded by
the European Union

- Today, the design process forces more multi-disciplinary work
- An increased attention to building greener buildings – Use of BIM-models to do LCA is here!
- 3D-model representation gives increased understanding
- "Everybody" can understand
(PhD or no PhD)



Thank you for your
attention!



BIM-LCA